

Transmission Equipment Corporation



Pole Line Hardware
Conductor Fittings
Cable Accessories

www.tecorp.in



ABOUT THE COMPANY

TEC was established in 1975, as a manufacturing unit specializing in the supply of electrical fittings for use by the Power Utility Companies. TEC has since evolved as India's leading manufacturer and exporter of products relative to:

- Pole Line Hardware
- Conductor Fittings
- Cable Accessories

Over the years, TEC has established its name and trust with customers from all over the world, especially in the EU (European Union), by developing new products through customization, research and co-operation with its esteemed customers. Accredited to ISO-9001:2008 by BSI Management Systems U.K., TEC has a fully equipped, modern manufacturing unit, utilizing the latest technology and machinery, thus enabling constant improvement in the quality of its products and at the same time keeping in mind its cost effectiveness.

TEC products are manufactured strictly in accordance with the specifications and designs laid down by accepted International Standards Institutes and, as such, have total control over the quality of its products right from the raw material to the finished item. Rigorous testing is a key element of our quality control which has given our quality conscious customers confidence in our supply.

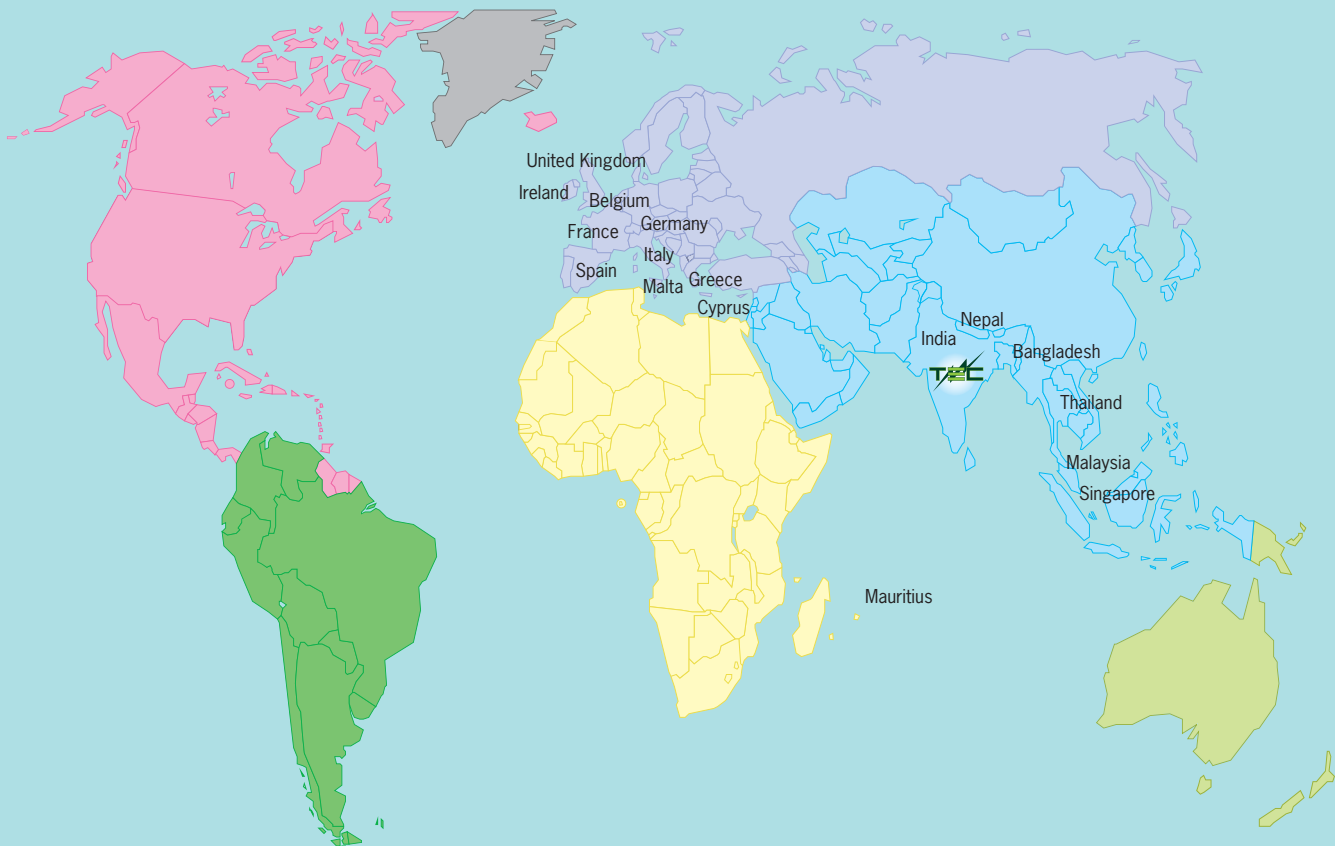




GLOBAL PRESENCE

TEC products are globally well accepted in emerging and matured markets with a large percentage of its products being sold within the EU.

Our products are being successfully supplied to the following countries.



PRODUCT PORTFOLIO

POLE LINE HARDWARE

POLE LINE HARDWARE



BENT BOLT

Material

Mild Steel as per BS 4360; Grade 43A

Finish

Hot Dip Galvanised as per BS EN ISO 1461



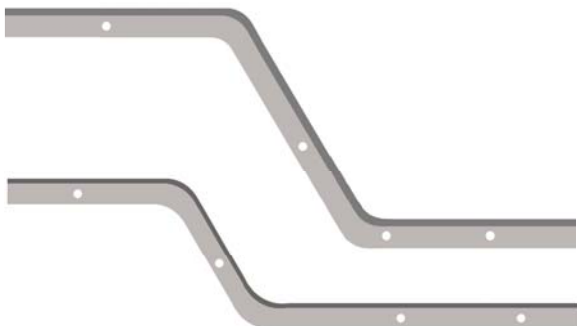
D IRON

Material

Mild Steel as per BS 4360; Grade 43A

Finish

Hot Dip Galvanised as per BS EN ISO 1461



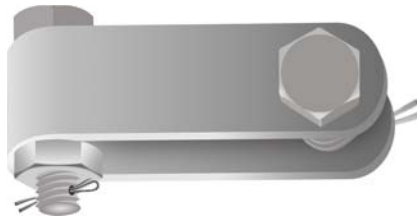
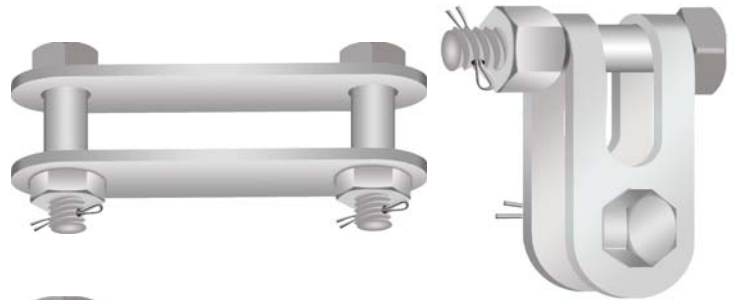
EAVES EXTENSION BRACKETS

Material

Mild Steel as per BS 4360; Grade 43A

Finish

Hot Dip Galvanised as per BS EN ISO 1461



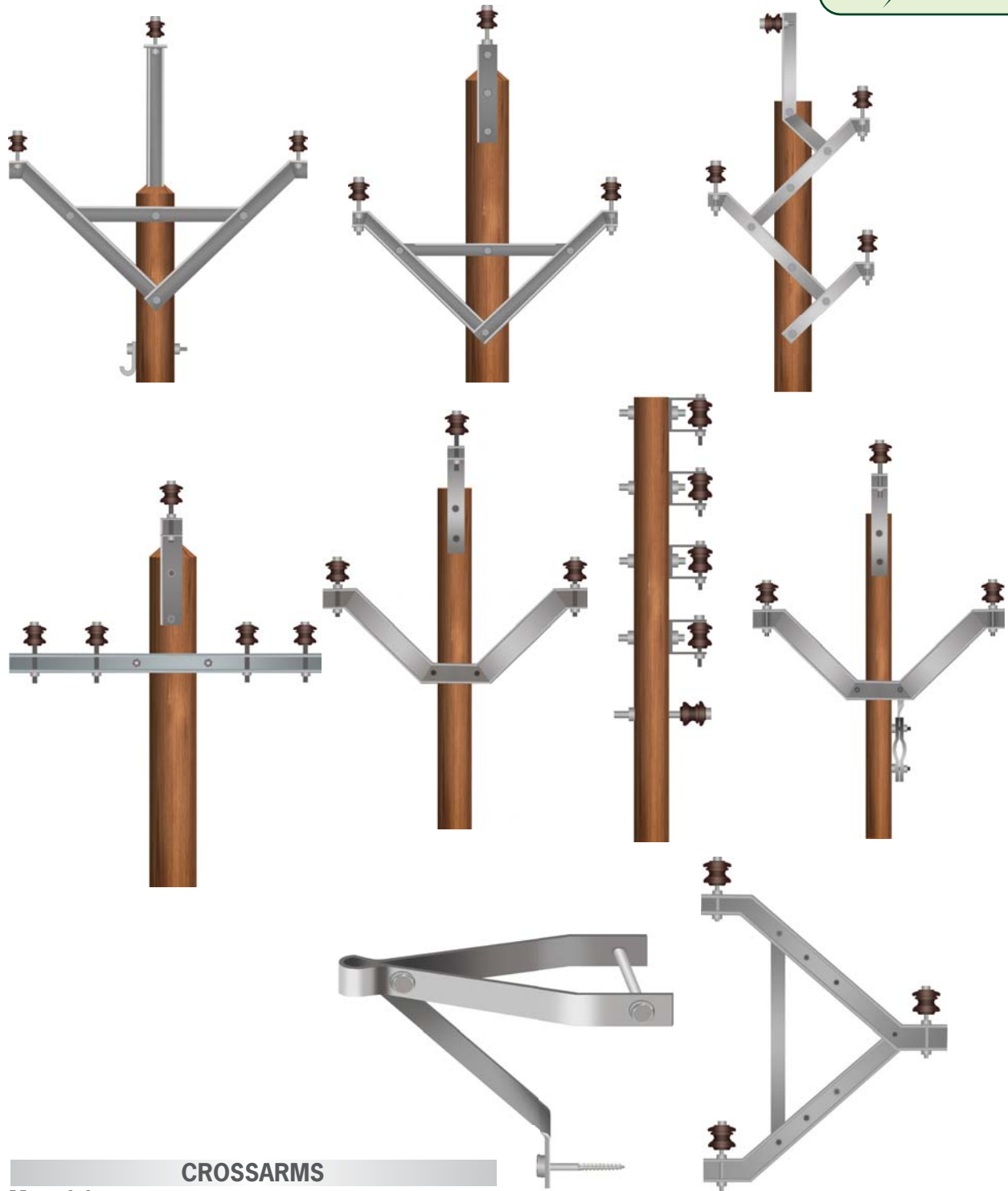
CLEVIS ACCESSORIES

Material

Mild Steel as per BS 4360; Grade 43A

Finish

Hot Dip Galvanised as per BS EN ISO 1461



CROSSARMS

Material

Mild Steel as per BS 4360; Grade 43A

Finish

Hot Dip Galvanised as per BS EN ISO 1461



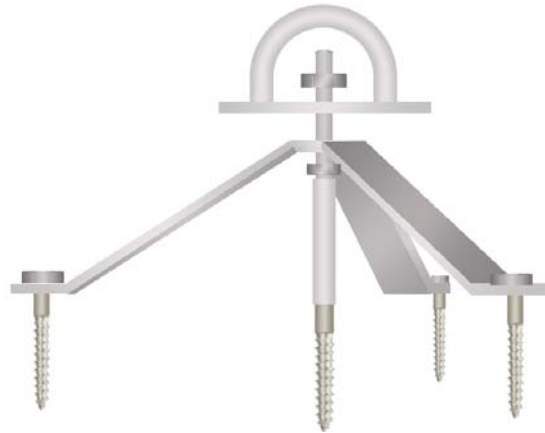
INSULATOR BRACKET

Material

Mild Steel as per BS 4360; Grade 43A

Finish

Hot Dip Galvanised as per BS EN ISO 1461



FACADE WALL BRACKET

Material

Mild Steel as per BS 4360; Grade 43A

Finish

Hot Dip Galvanised as per BS EN ISO 1461



Hook Screw



Hook Screw Nut Type



J Hook



Pole Hook / J Bolt

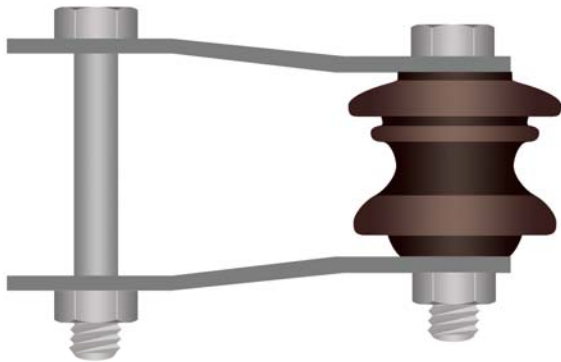
HOOKS

Material

Mild Steel as per BS 4360; Grade 43A

Finish

Hot Dip Galvanised as per BS EN ISO 1461



INSULATOR STRAP

| | |
|-----------------|--|
| Material | Mild Steel as per BS 4360; Grade 43A |
| Finish | Hot Dip Galvanised as per BS EN ISO 1461 |



POLE CLAMP

| | |
|------------------|--|
| Material | Mild Steel as per BS 4360; Grade 43A |
| Finish | Hot Dip Galvanised as per BS EN ISO 1461 |
| Fasteners | Mild Steel or High Tensile Steel |



PIPE / POLE CLAMP

| | |
|-----------------|--|
| Material | Mild Steel as per BS 4360; Grade 43A |
| Finish | Hot Dip Galvanised as per BS EN ISO 1461 |



LARGE SHACKLE STRAP FOR STEEL POLE

| | |
|-----------------|--|
| Material | Mild Steel as per BS 4360; Grade 43A |
| Finish | Hot Dip Galvanised as per BS EN ISO 1461 |



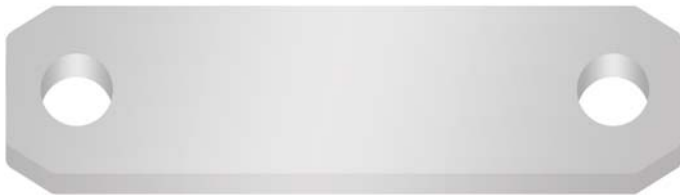
Cranked Link Assembly



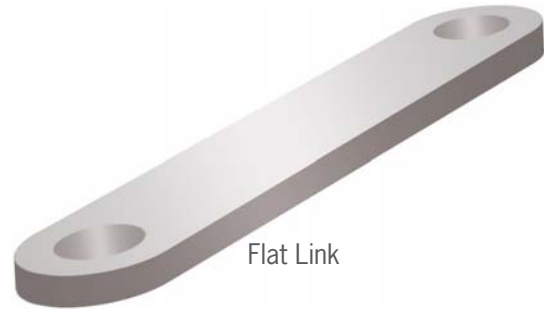
Cranked Link



Quad Zebra Drop Link



Parallel Conversion Link



Flat Link



Twisted Link

LINK

Material

Mild Steel as per BS 4360; Grade 43A

Finish

Hot Dip Galvanised as per BS EN ISO 1461

SAG ADJUSTMENT PLATE

Material

Mild Steel as per BS 4360; Grade 43A

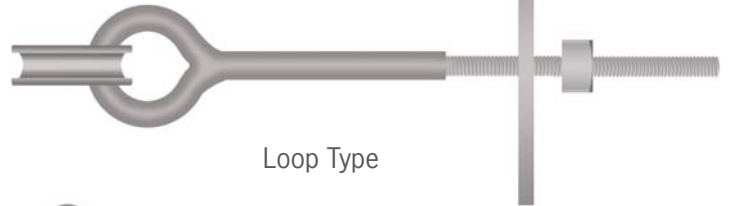
Finish

Hot Dip Galvanised as per BS EN ISO 1461

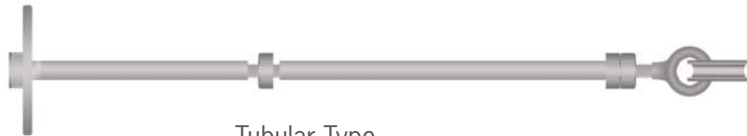




Bow Type



Loop Type



Tubular Type

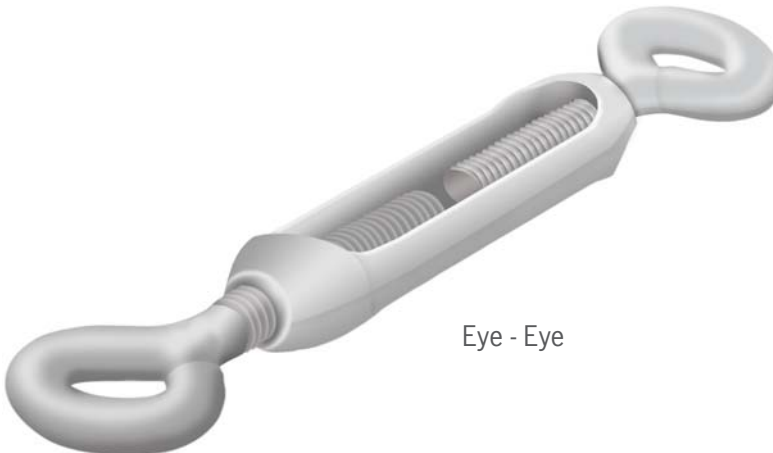
STAY RODS

Material

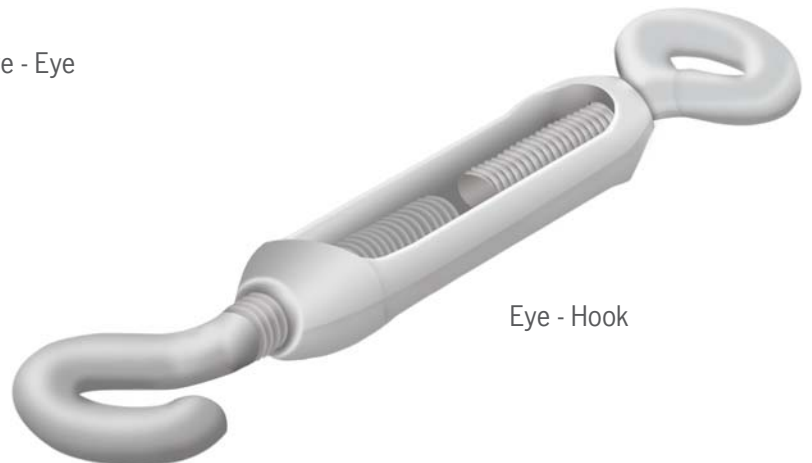
Mild Steel as per BS 4360; Grade 43A

Finish

Hot Dip Galvanised as per BS EN ISO 1461



Eye - Eye



Eye - Hook

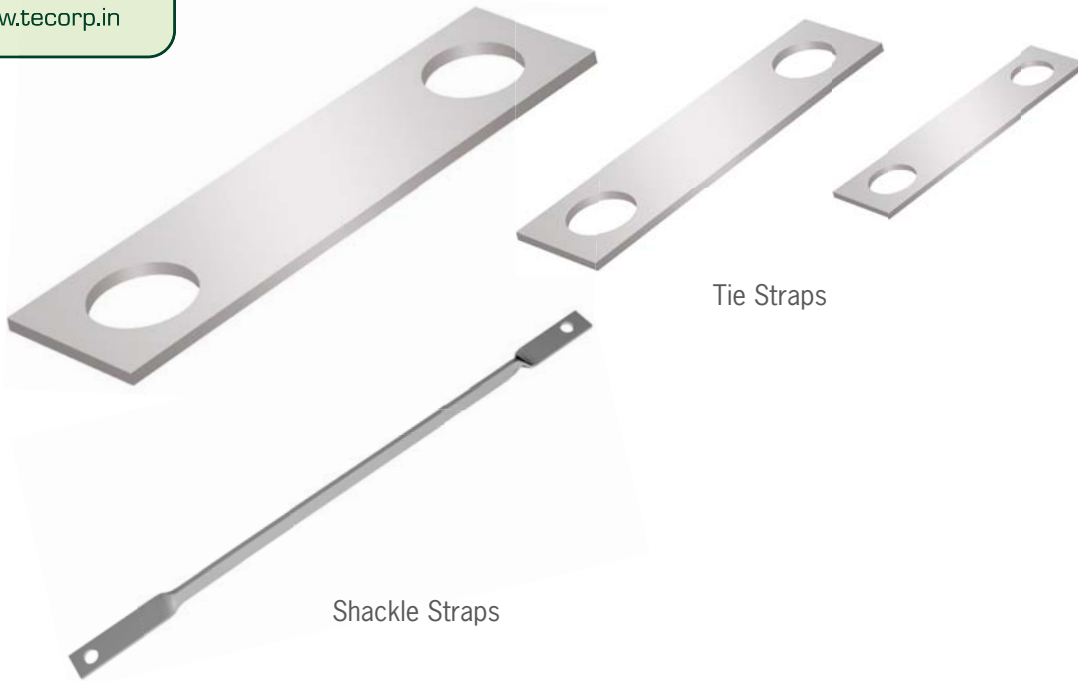
STRAINING SCREW

Material

Mild Steel as per BS 4360; Grade 43A

Finish

Hot Dip Galvanised as per BS EN ISO 1461



Shackle Straps

Tie Straps

STRAPS

Material

Mild Steel as per BS 4360; Grade 43A

Finish

Hot Dip Galvanised as per BS EN ISO 1461



TIE BAR

Material

Mild Steel as per BS 4360; Grade 43A

Finish

Hot Dip Galvanised as per BS EN ISO 1461



TOWING PLATES

Material

Mild Steel as per BS 4360; Grade 43A

Finish

Hot Dip Galvanised as per BS EN ISO 1461



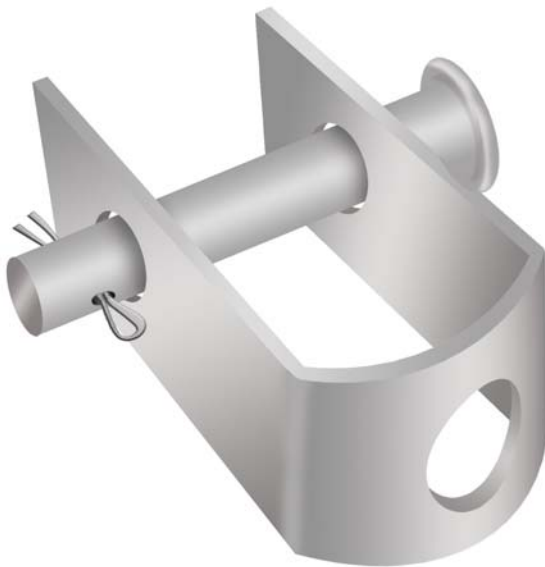
U BOLT

Material

Mild Steel as per BS 4360; Grade 43A

Finish

Hot Dip Galvanised as per BS EN ISO 1461



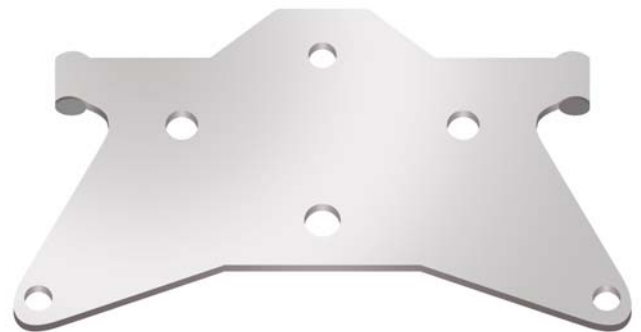
U CLEVIS

Material

Mild Steel as per BS 4360; Grade 43A

Finish

Hot Dip Galvanised as per BS EN ISO 1461



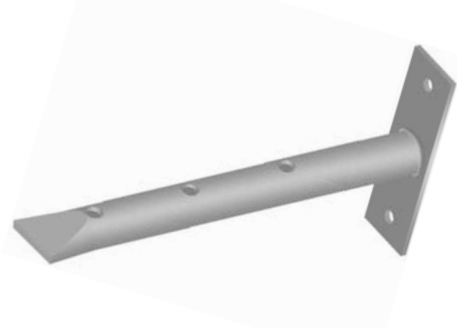
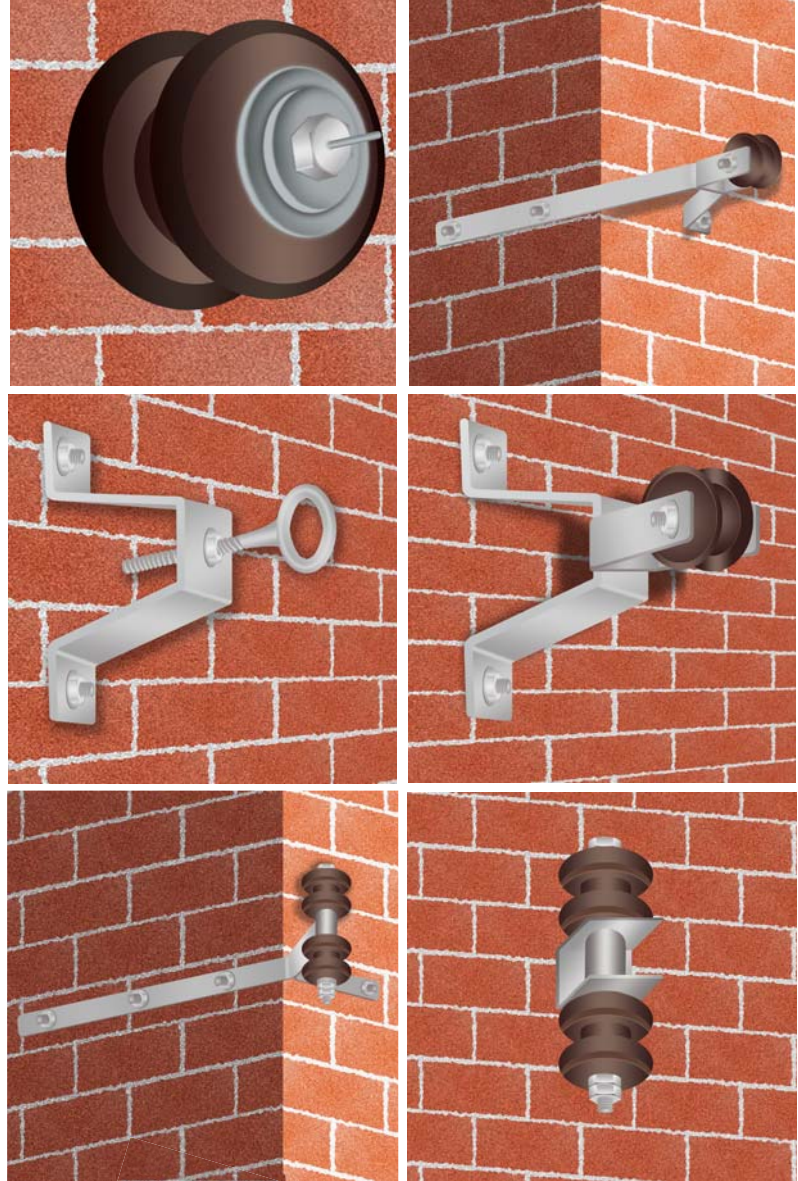
YOKE PLATES

Material

Mild Steel as per BS 4360; Grade 43A

Finish

Hot Dip Galvanised as per BS EN ISO 1461



WALL BRACKETS

| | |
|-----------------|--|
| Material | Mild Steel as per BS 4360; Grade 43A |
| Finish | Hot Dip Galvanised as per BS EN ISO 1461 |